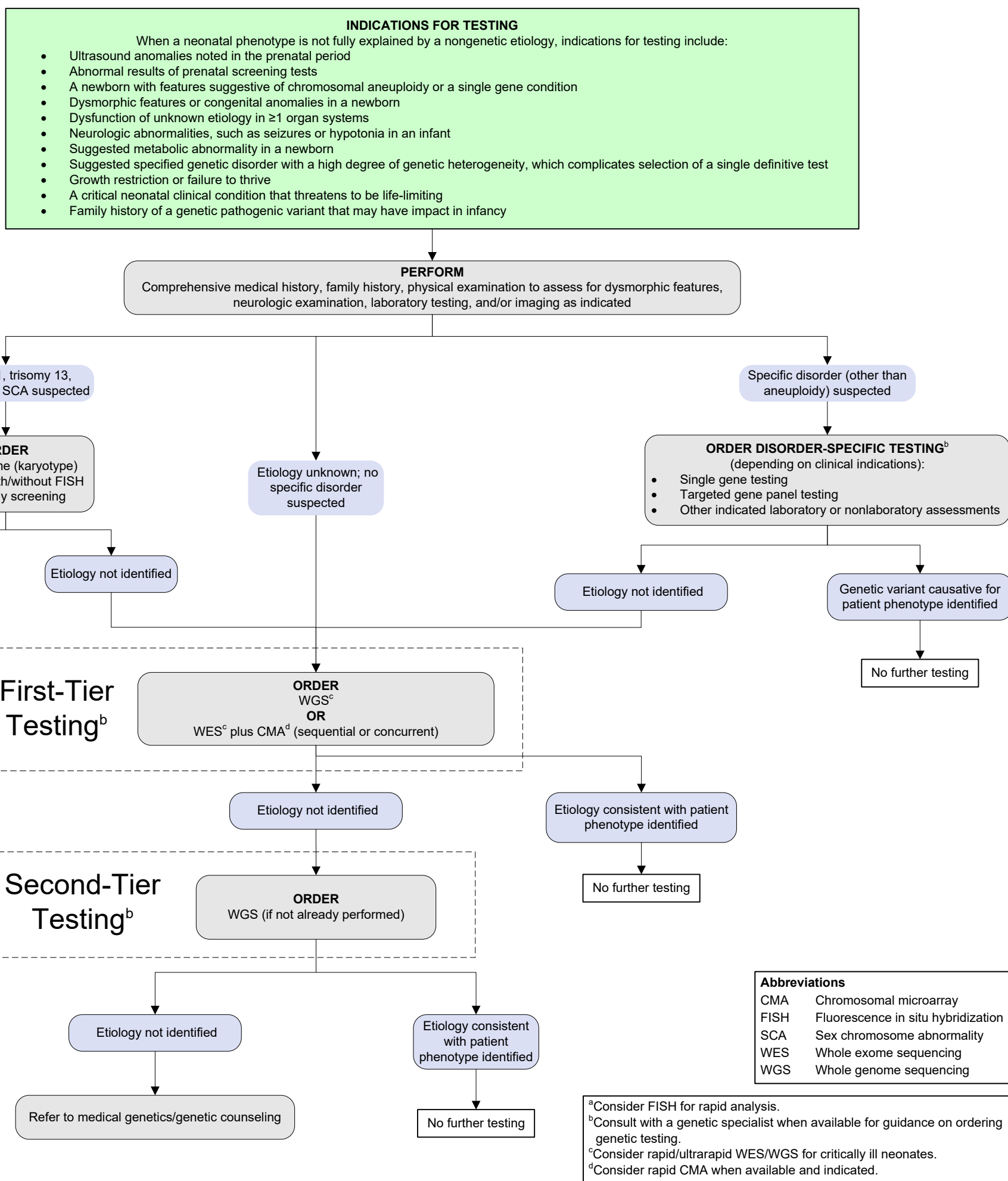


[Click here for topics associated with this algorithm.](#)



Abbreviations

CMA	Chromosomal microarray
FISH	Fluorescence in situ hybridization
SCA	Sex chromosome abnormality
WES	Whole exome sequencing
WGS	Whole genome sequencing

^aConsider FISH for rapid analysis.
^bConsult with a genetic specialist when available for guidance on ordering genetic testing.
^cConsider rapid/ultra-rapid WES/WGS for critically ill neonates.
^dConsider rapid CMA when available and indicated.

References

- Manickam K, McClain MR, Demmer LA, et al. [Exome and genome sequencing for pediatric patients with congenital anomalies or intellectual disability: an evidence-based clinical guideline of the American College of Medical Genetics and Genomics \(ACMG\)](#). *Genet Med*. 2021;23(11):2029-2037.
- Manning M, Hudgins L. [Array-based technology and recommendations for utilization in medical genetics practice for detection of chromosomal abnormalities](#). *Genet Med*. 2010;12(11):742-745.